



Offering Memorandum

±9,000 SF LIGHT INDUSTRIAL BUILDING

236 STANDARD WAREHOUSE ROAD, LUGOFF, SOUTH CAROLINA 29078

deep experience in
FLEX + LIGHT INDUSTRIAL

The market for small to mid-sized industrial assets remains tight with limited inventory, high construction costs, and population growth in the Southeastern US buoying demand and pricing for existing assets.

Our team has facilitated sales, leases, and redevelopment plans on flex and light industrial assets throughout South Carolina. No two deals and no two days look alike, but guiding our clients through the proverbial briar patch of CRE transactions energizes us to do more and do better every time.

We're pleased to present this property in Lugoff, SC, ideally suited for owner-occupancy or potential investment.

“ Josh and his team's **steady hand and consistent, level-headed guidance** have been invaluable to me as I build my portfolio of properties. In over 15 years of being a real estate investor, I am very lucky to have had the opportunity to work with someone I can **trust** so much, and who has been an **integral part of my success.** ”

- ATTORNEY and INVESTOR, NEW YORK
**references available upon request*



Josh Tew, CCIM, MBA josh@pintailcre.com | 864.414.6778

Anna Newton Spiers, MBA anna@pintailcre.com | 864.568.3305

Monty Todd, MRED monty@pintailcre.com | 803.760.5559



CONFIDENTIALITY STATEMENT

The information contained herein is intended to give the reader ample information about the subject property. All information has been gathered from sources we deem to be reliable and credible; however, no warranty or guarantee, in any manner whatsoever, is intended or made as to its accuracy and none may be expressed or implied by anything herein contained or made by agent of the principal relative to the subject property.

This submission is confidential. It is the property of Pintail Capital Partners, LLC, and any reproduction of any portion of the enclosed without written consent from an official representative of Pintail Capital Partners, LLC, is strictly prohibited. The information offered here is subject to prior placement and/or withdrawal from the market, cancellation, modification, correction, errors, omissions, price changes, or any other changes without notice.

Please make arrangements with Pintail Capital Partners, LLC, prior to any property inspections.



PO BOX 9776 . GREENVILLE SC 29604
864.729.4500 | WWW.PINTAILCRE.COM

PROPERTY OVERVIEW

236 Standard Warehouse Road, Lugoff, SC 29078

INVESTMENT OR OWNER-USER OPPORTUNITY

Current owner-occupant desires short-term (~1 year) sale-leaseback, to be negotiated.

PROPERTY DETAILS

County: Kershaw

Parcel ID: 310-00-00-064

Building Size: 9,000 SF
±5,000 SF consisting of 4 offices, reception area and air-conditioned work area + ±4,000 SF of warehouse space

Lot Size: ±.58 AC

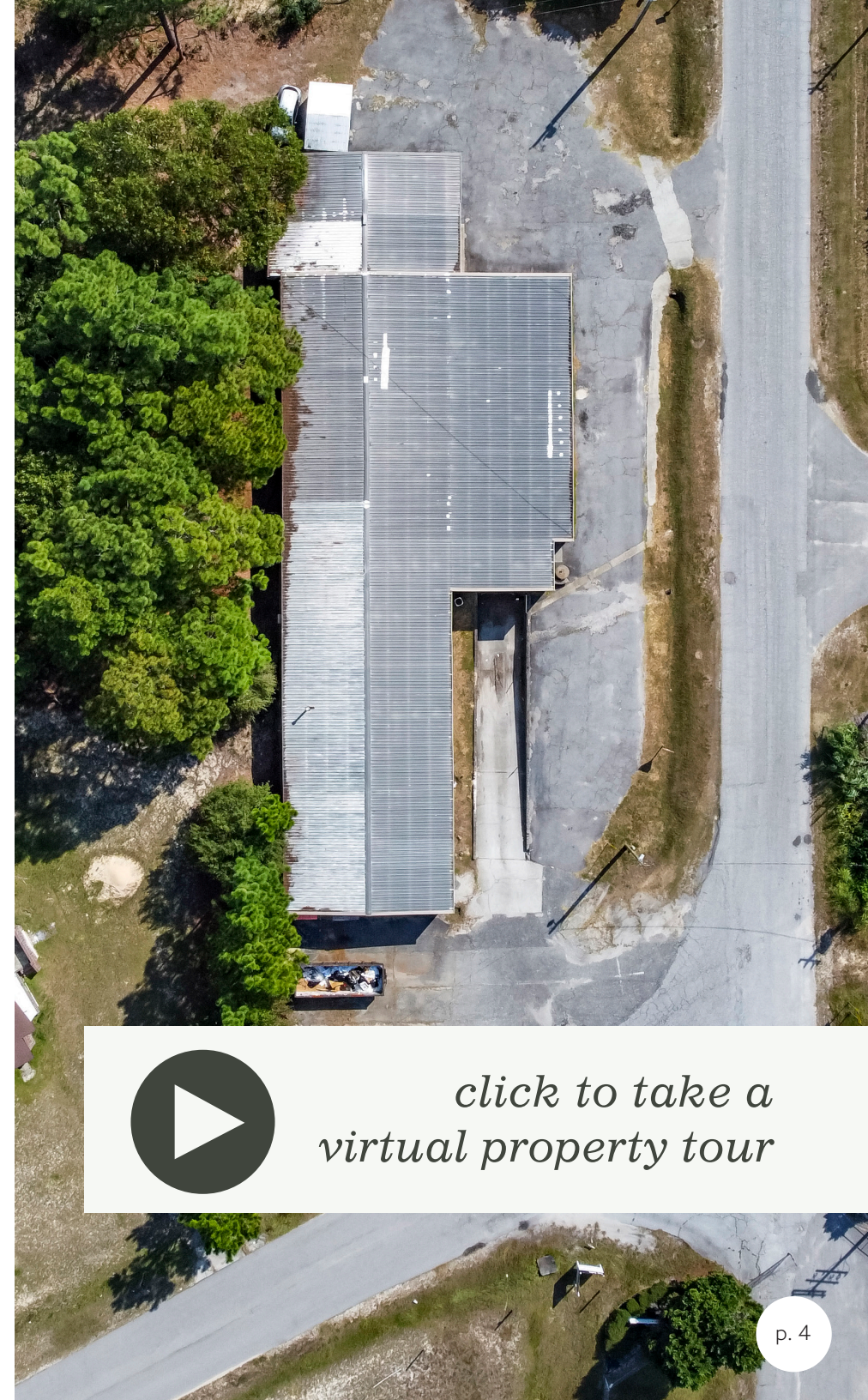
Property Type: Light Industrial

Tenant: Lugoff Industrial Textile Products

Doors: Dock Door + Roll-Up Door

Location: Located among other manufacturing facilities and within 2 miles of I-20 with double-lane access via Hwy 601

SALE PRICE: \$775,000



*click to take a
virtual property tour*

CAMDEN, SC



BOYLE DISTRIBUTION CENTER



SURROUNDING AREA (E)

236 Standard Warehouse Road, Lugoff, SC 29078

ELGIN, SC



LUGOFF ELGIN HIGH SCHOOL

PEPPER RIDGE COMMUNITY

Performance
SURFACES



SURROUNDING AREA (W)

236 Standard Warehouse Road, Lugoff, SC 29078

LUGOFF, SC

LUGOFF ELGIN MIDDLE SCHOOL

BRAND NEW RESIDENTIAL DEVELOPMENT

Performance
SURFACES



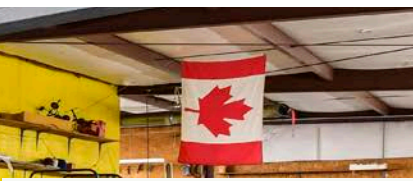
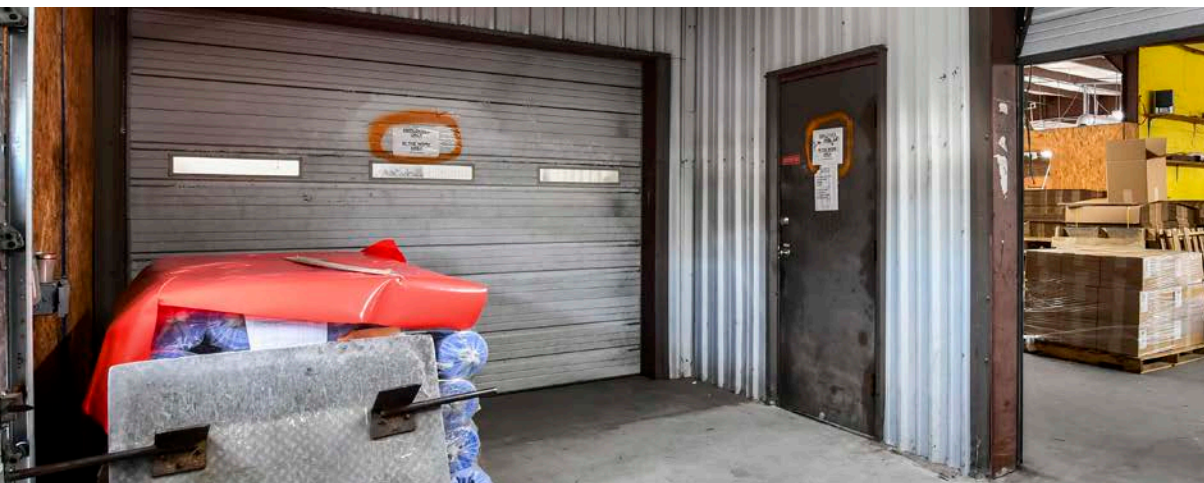
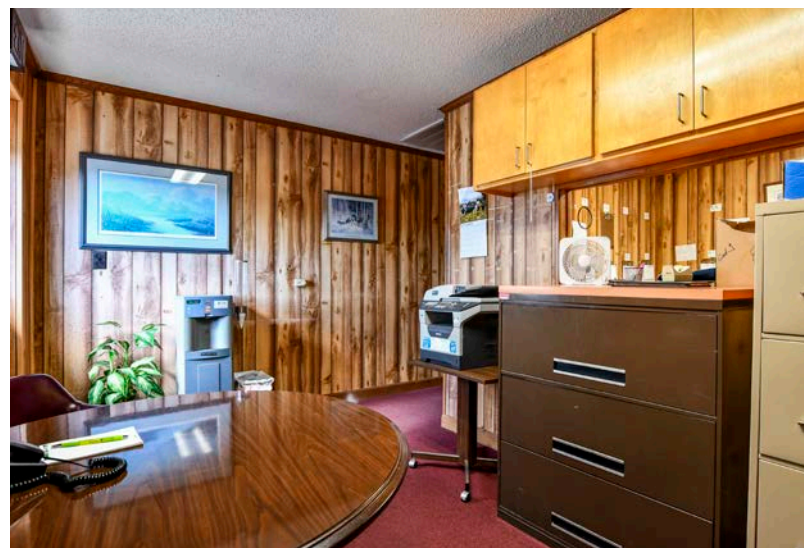
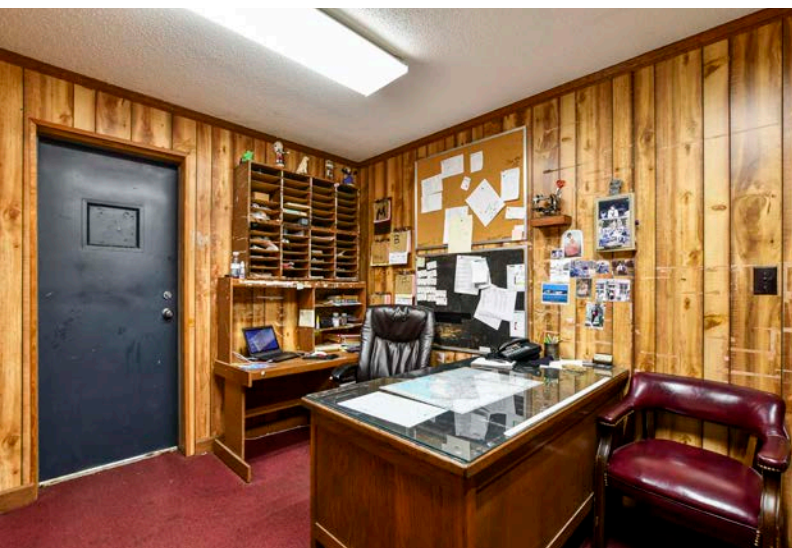
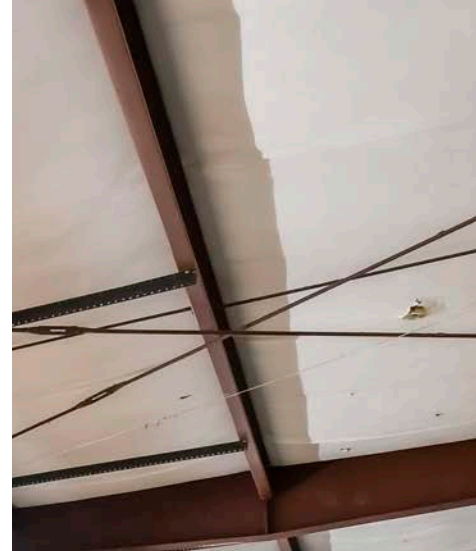
SURROUNDING AREA (N)

236 Standard Warehouse Road, Lugoff, SC 29078



SURROUNDING AREA (S)

236 Standard Warehouse Road, Lugoff, SC 29078



INTERIORS

236 Standard Warehouse Road, Lugoff, SC 29078

For more information on 236 Standard Warehouse Road in Lugoff, South Carolina,
please contact:

Josh Tew, CCIM

JOSH@PINTAILCRE.COM
864.414.6778

Anna Spiers, MBA

ANNA@PINTAILCRE.COM
864.568.3305

Monty Todd, MRED

MONTY@PINTAILCRE.COM
803.760.5559

